



# JR EAST, Railroads and Economic Benefits

**Satoshi SEINO**

President and CEO, JR EAST



**Our Railroad Network**

**JR EAST HSR Expertise**

**Economic Effects of Railroads**

# Our Railroad Network

# Our Railroad Network

## JR EAST is the largest railroad company in JAPAN

Network: 4,677 miles

The World's Largest

No. of Passengers: 17 million /day

The World's Largest

No. of Trains: 12,761 /day

Revenues: \$ 29 billion



Greater Tokyo area

\*Numbers are as of FY ended March 31 , 2010 or April 1, 2010  
1dollar=90yen

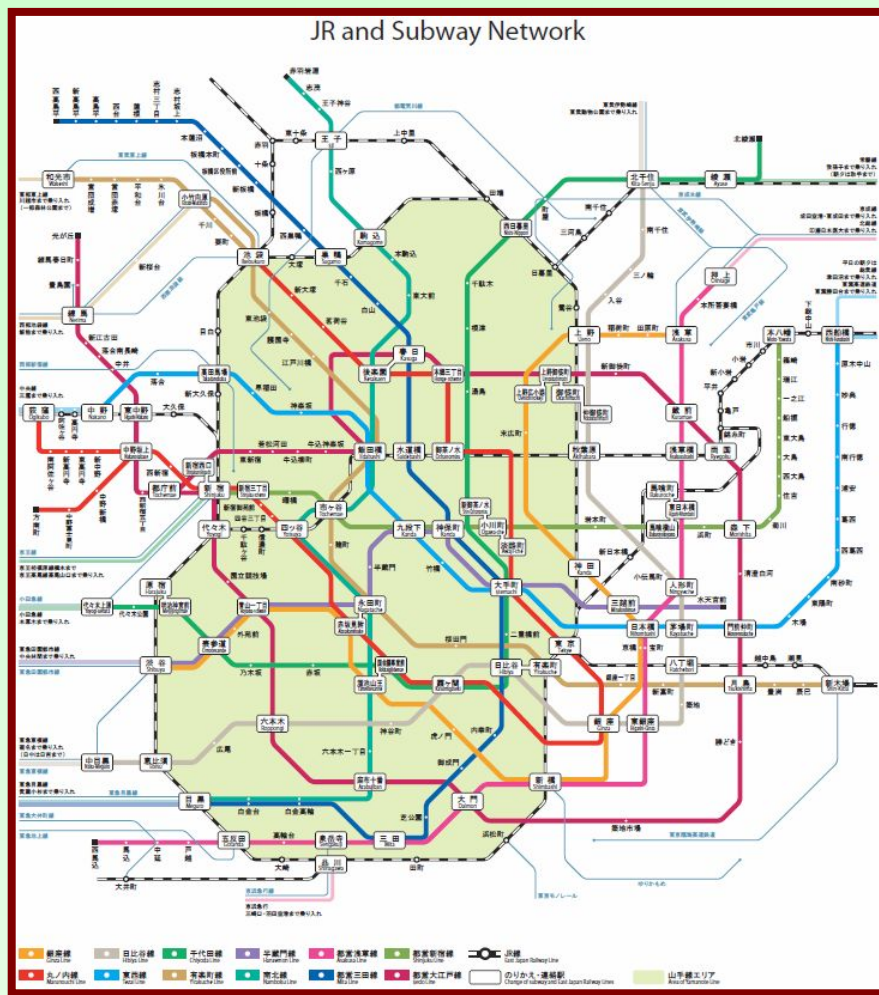
# Our Railroad Network

2010~



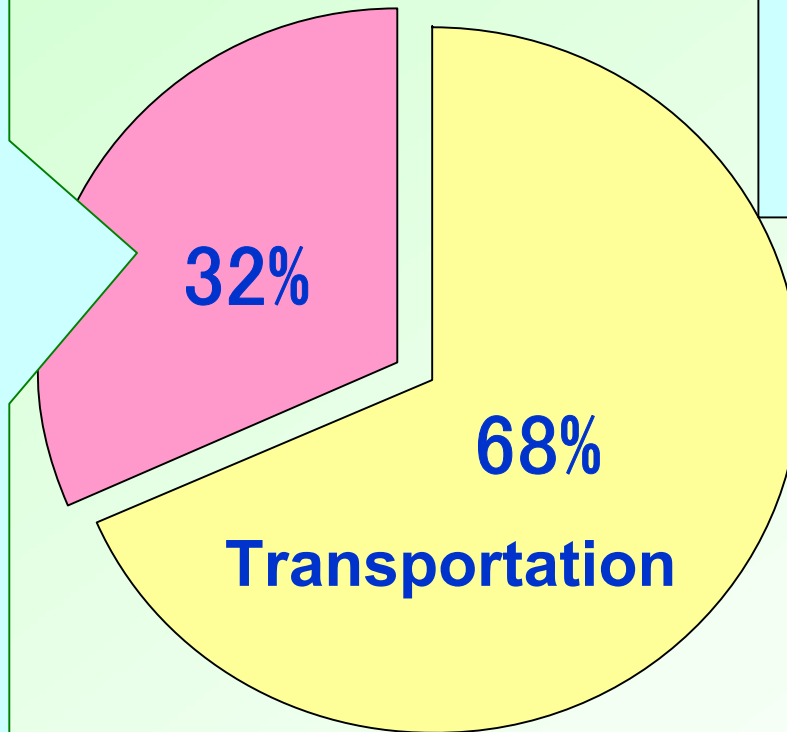
# Our Railroad Network

## Conventional lines in Tokyo greater area

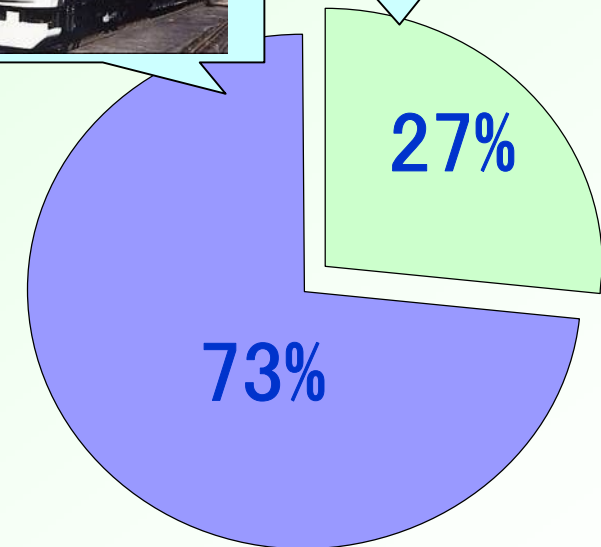


# Our Railroad Network

## Revenues from Railroad and Lifestyle Businesses



**JR EAST's  
Group Total  
\$ 29 billion**



**Railroad Revenue**

**\$ 18 billion**

Financial Result of 2009.4 - 2010.3

# JR EAST HSR Expertise

① *High Speed*

② *Large Capacity*

③ *High Frequency*

④ *Through Service*

⑤ *Snow Resistance*



# JR EAST HSR Expertise

## ① High Speed

**Series E5 will be introduced in March 2011**

By 2013, maximum commercial speed of 200mph planned



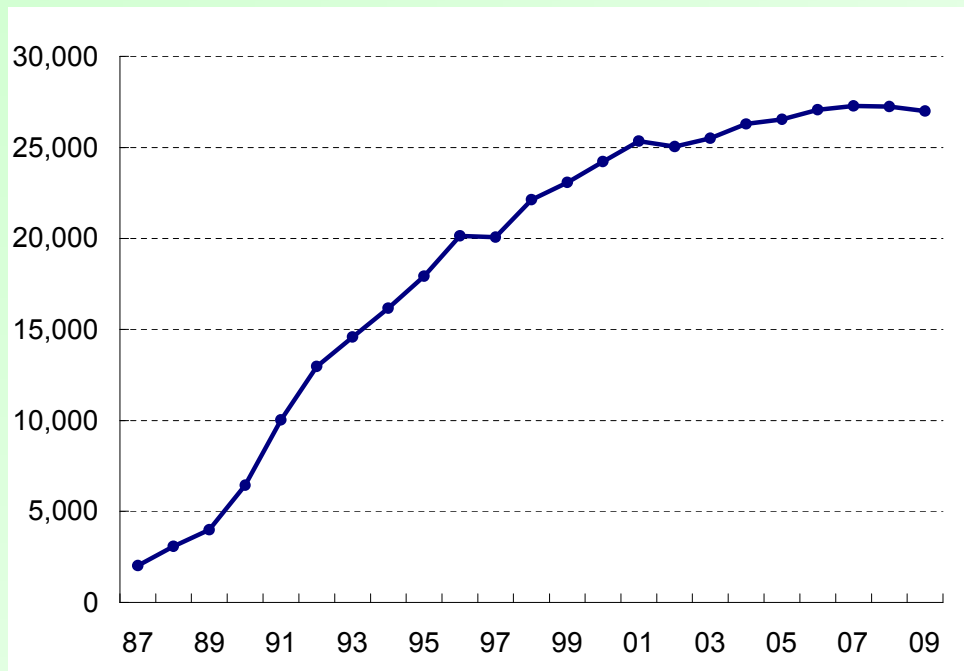
## ② Large Capacity

### Series E4 (Double-decker)



No. of seats : **1,634**

(the world's largest high-speed train)



**No. of Shinkansen  
commuter pass holders**



# JR EAST HSR Expertise

## ③ High Frequency

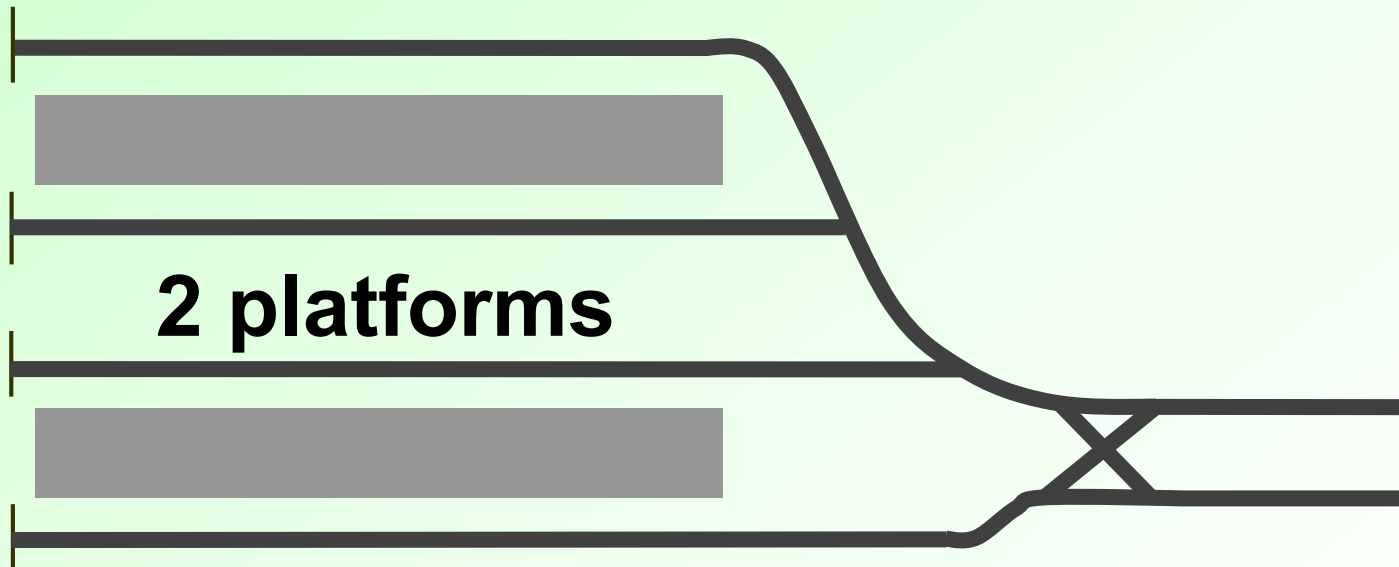


東北・山形・秋田・上越・長野新幹線 Tohoku · Yamagata · Akita · Joetsu · Nagano Shinkansen					
列車名 Train	番号 Train No.	時刻 Time	行先 Destination	番線 Track	記事 Remarks
HAYATE KOMACHI	21	13:56	HACHINOHE AKITA	21	16 Cars
ASAMA	527	14:04	NAGANO	20	8 Cars
Max YAMABIKO	TSUBASA 119	14:08	SENDAI YAMAGATA, SHINJO	22	15 Cars
YAMABIKO	211	14:20	SENDAI	21	10 Cars
Max TOKI	327	14:32	NIIGATA	23	8 Cars
YAMABIKO	57	14:36	MORIOKA	21	10 Cars

**5** Destinations from Tokyo station  
**4 min.** Minimum train interval

## ③ High Frequency

### Tokyo Station Shinkansen platforms



**4 min.**  
**400**

**Minimum train interval**  
**Trains per day**

# JR EAST HSR Expertise

## ③ High Frequency

# 12 min. Turn back



① Train arrives



② Passengers get off



③ Clean up



④ Finished



⑤ Passengers get on

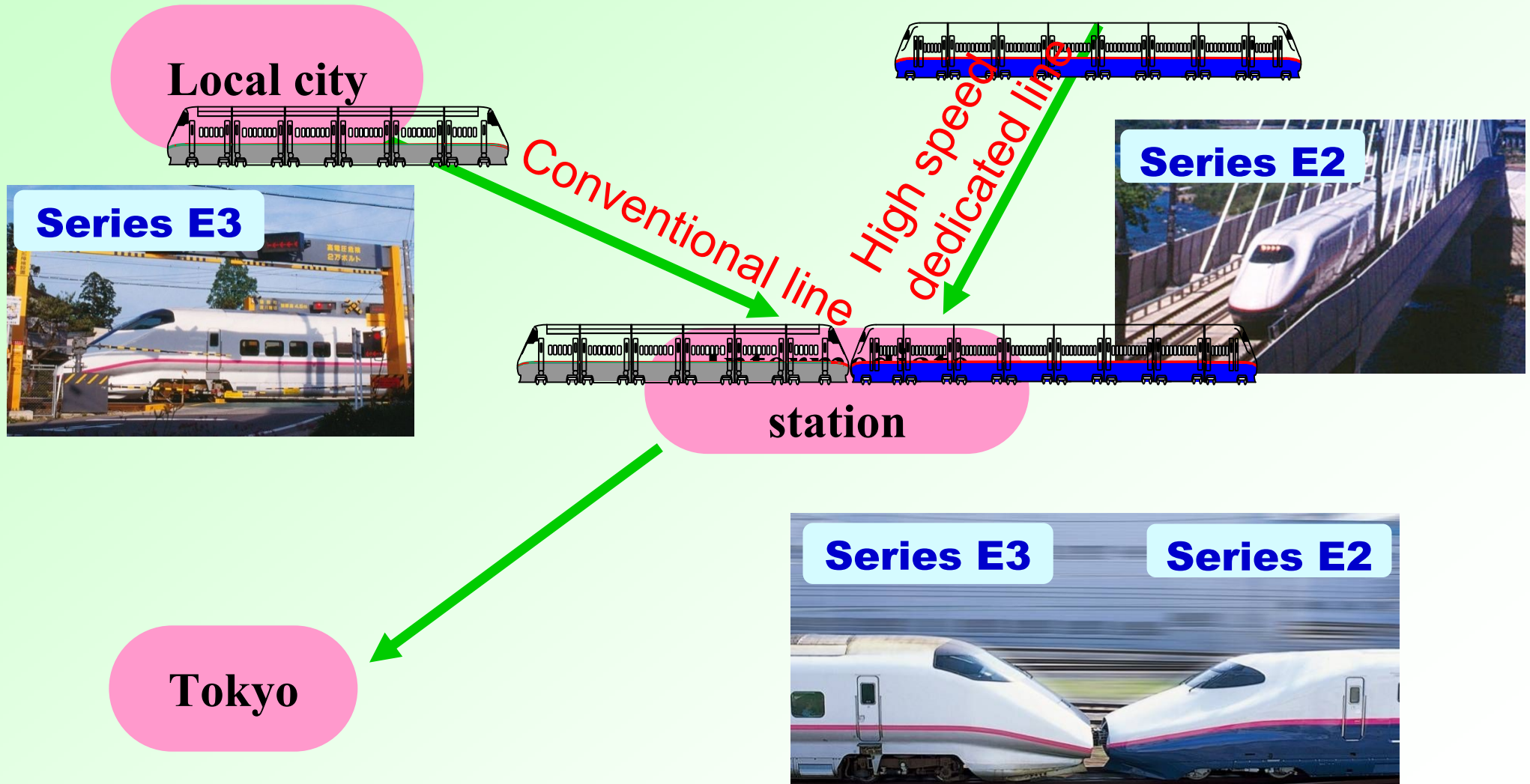


⑥ Train departs

# JR EAST HSR Expertise

## ④ Through Service

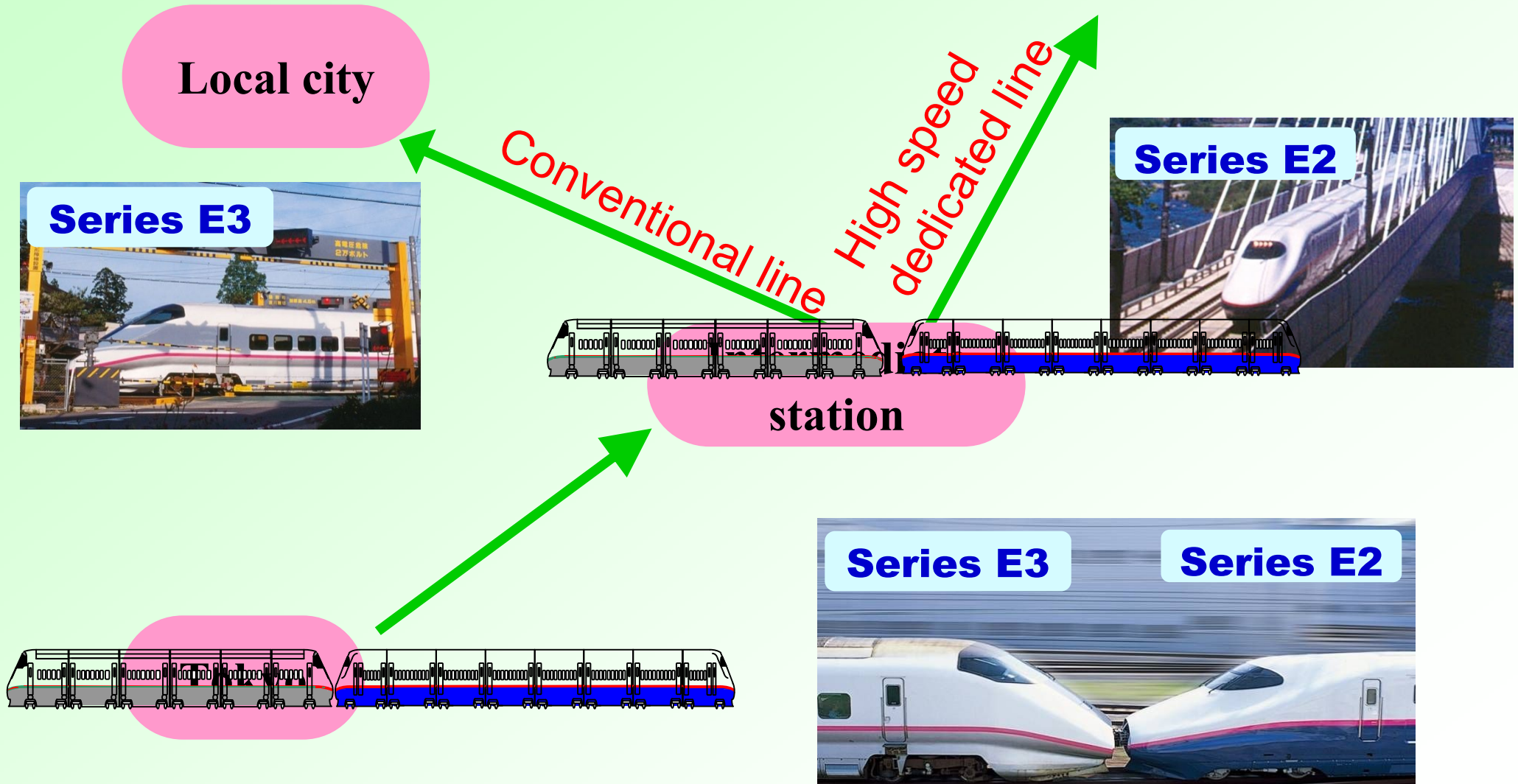
### Coupling capability



# JR EAST HSR Expertise

## ④ Through Service

### Uncoupling capability



# JR EAST HSR Expertise

## ④ Through Service

## Series E6 Debut in FY2012



Series E5

Series E6





# JR EAST HSR Expertise

## ⑤ Snow Resistance



# Economic Effects of Railroads

**① Stations and their surroundings**

**② Job opportunities**

# Economic Effects of Railroads

## ① Stations and their surroundings

### Tokyo Station City



# ***Economic Effects of Railroads***



# ***Economic Effects of Railroads***

## **① Stations and their surroundings**

### ***Shinkansen enhances commercial value of stations***

#### **Sendai Station**

##### **Before Shinkansen**



##### **Now**



# *Economic Effects of Railroads*

## ① Stations and their surroundings

### *Impact on regional economy*

## Sakudaira Station

### Before Shinkansen



### Now



# Economic Effects of Railroads

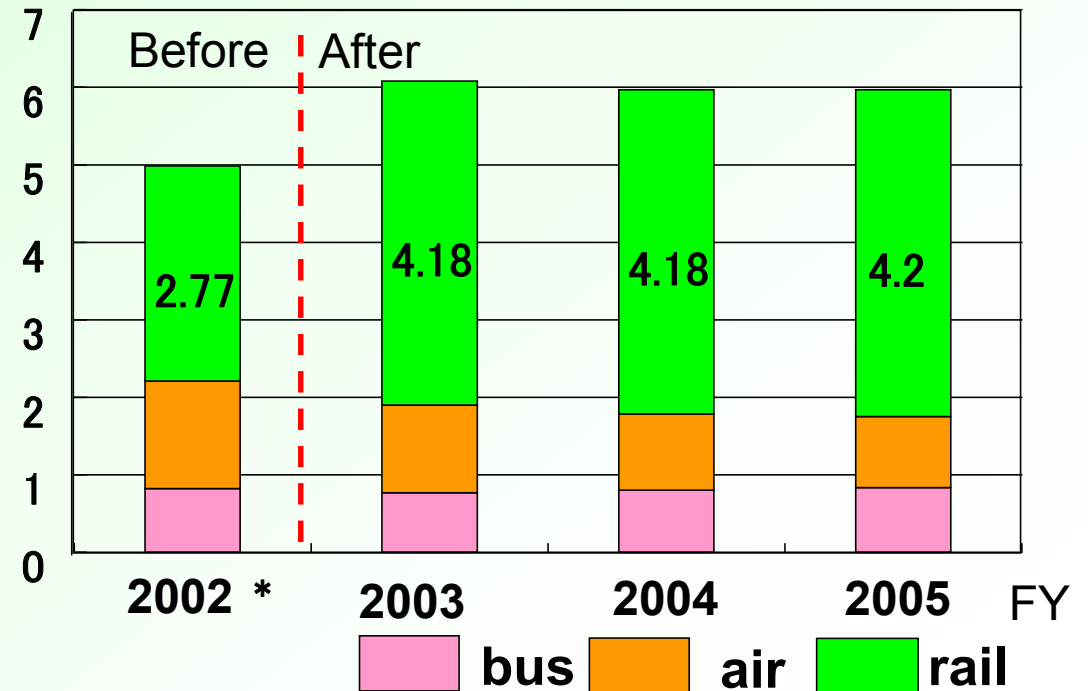
## ② Job opportunities

### Economic effects of Hachinohe extension (60 miles)



### Number of Passengers between Morioka and Hachinohe

million



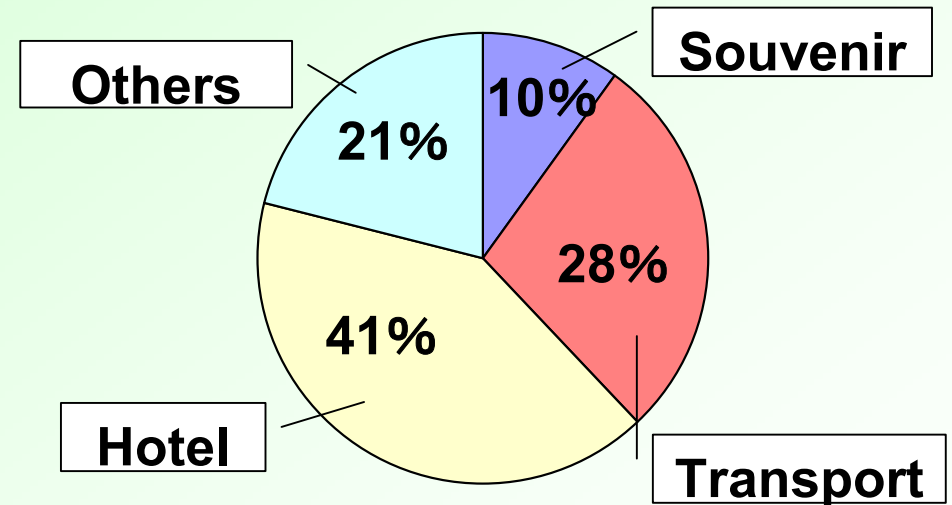
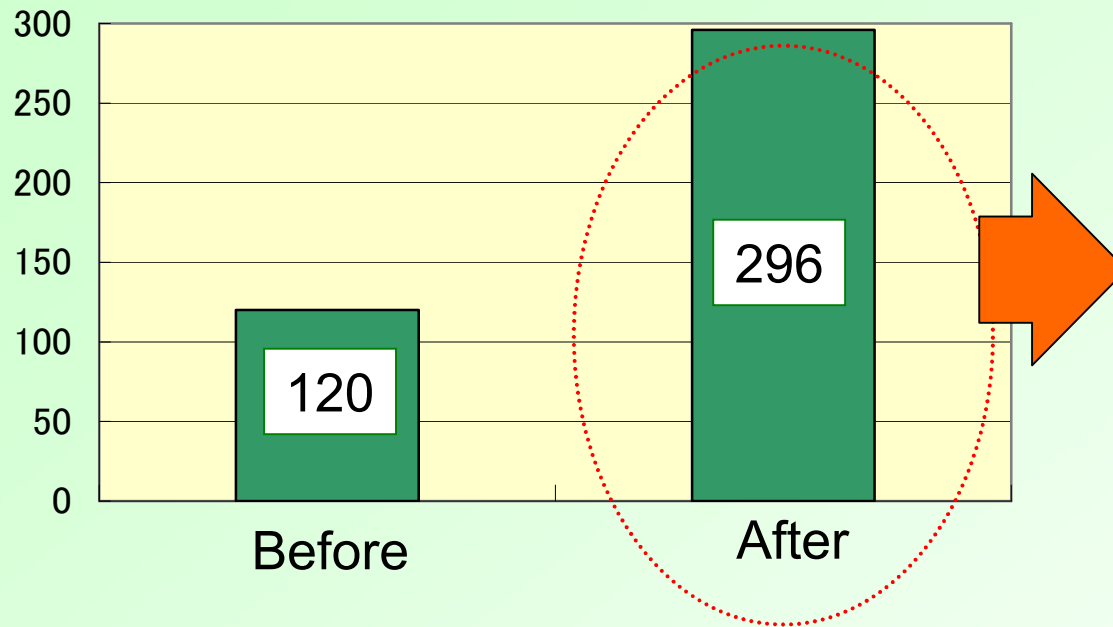
\* Extension to Hachinohe in Dec.2002

# Economic Effects of Railroads

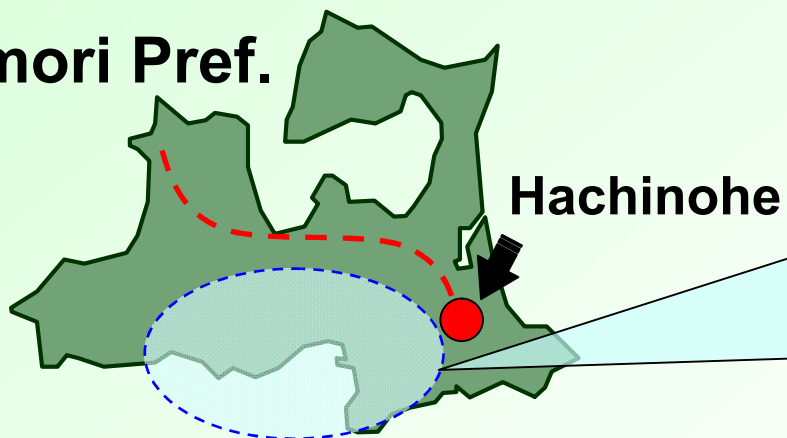
## ③ Economic Impacts

### Sightseeing consumption in Aomori Pref.

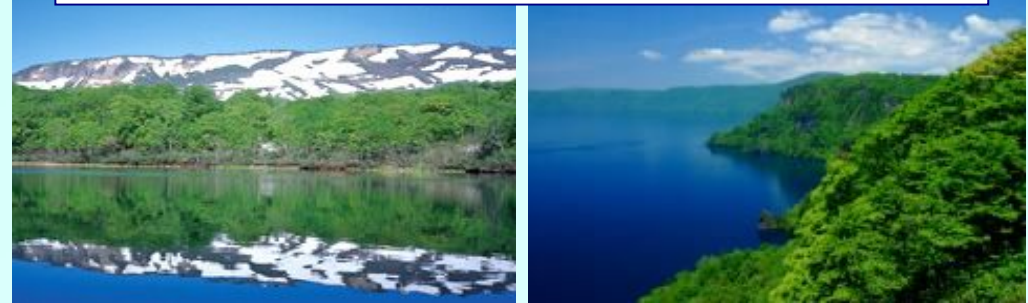
\$ million



Aomori Pref.



Towada-Hachimantai National Park





# Economic Effects of Railroads

## ② Job opportunities

7,000 Jobs created

Hachinohe Station

Hotel

Ads

Store



# Economic Effects of Railroads

## ② Job opportunities



e-money

Credit card

Construction

Shopping Center

Rolling Stock Production

Real Estate

Component supply

**JR EAST Group**  
**95,000**

Transport Operations  
**55,000**

Office Building

Maintenance

Hotel

Logistics

Cleaning



# *Conclusion*

